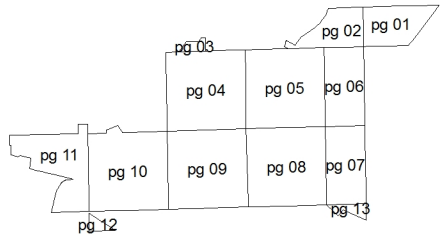
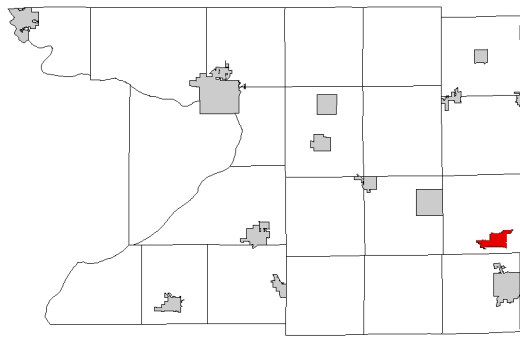
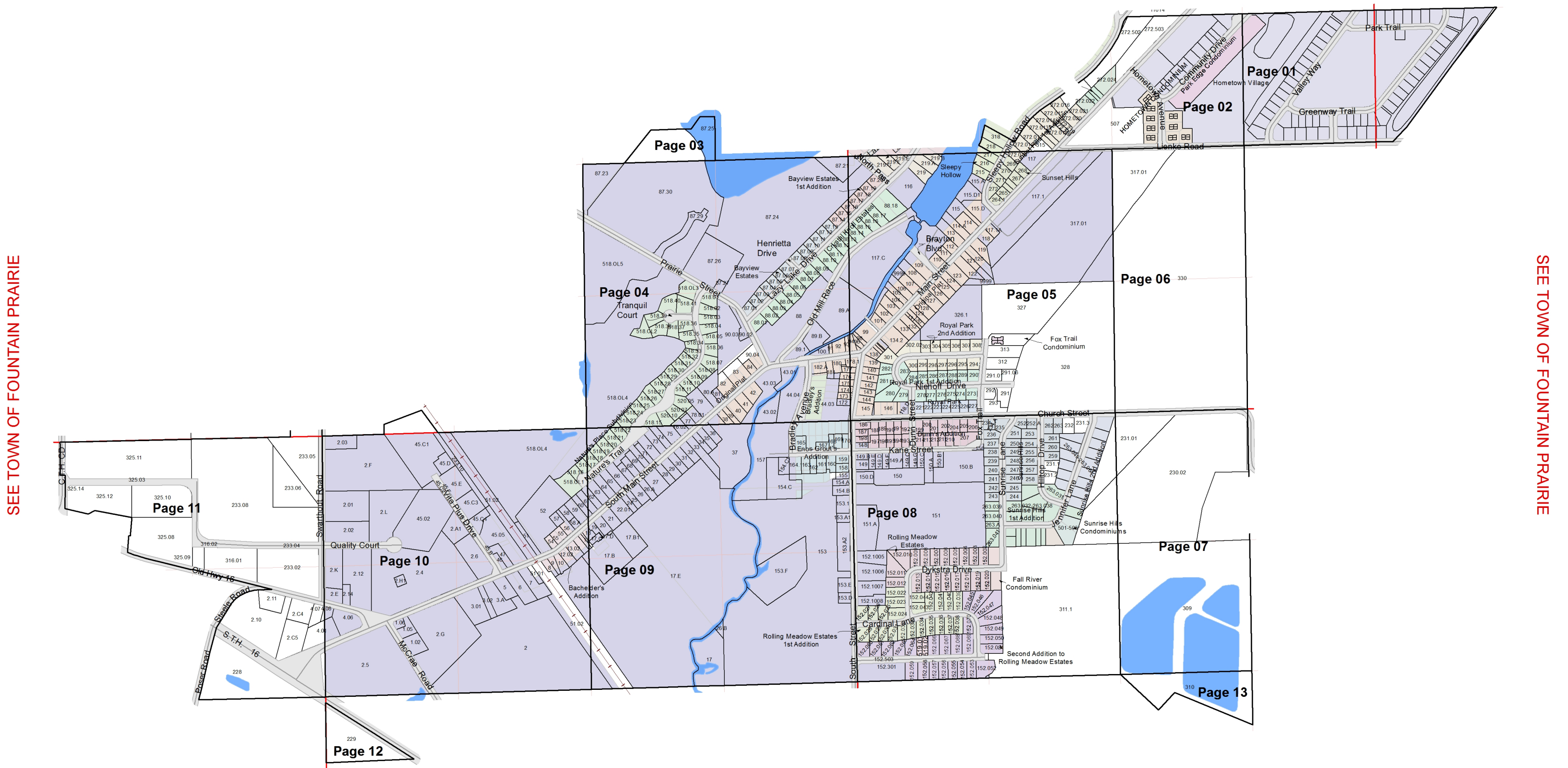


VILLAGE OF FALL RIVER  
T11N R12E



SEE TOWN OF FOUNTAIN PRAIRIE



February 13, 2014  
Columbia County Land Information

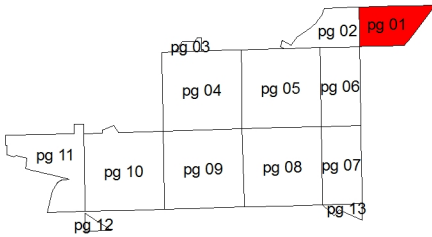
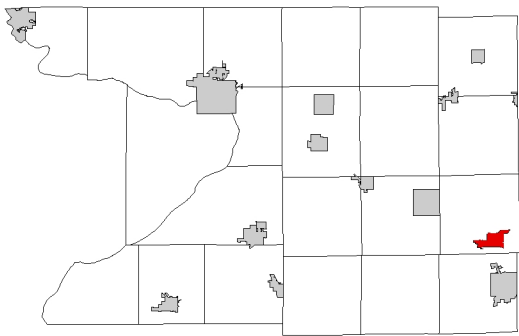
SEE TOWN OF FOUNTAIN PRAIRIE

VILLAGE OF FALL RIVER  
T11N R12E

VILLAGE OF FALL RIVER

T11N R12E

1 inch = 200 feet 1:2,400



SEE TOWN OF FOUNTAIN PRAIRIE



SEE VILLAGE OF FALL RIVER - Page 02

SEE TOWN OF FOUNTAIN PRAIRIE

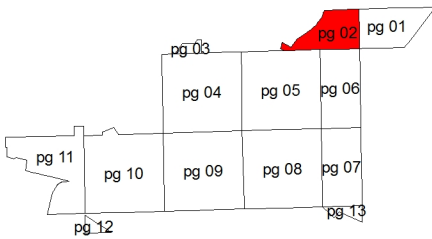
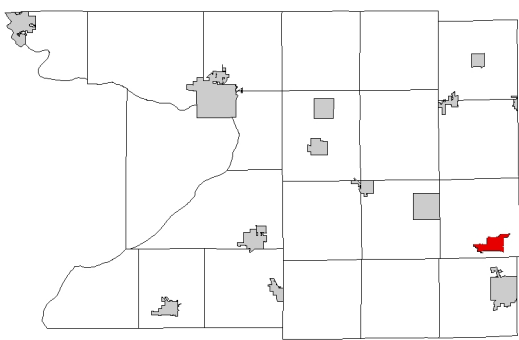
SEE TOWN OF FOUNTAIN PRAIRIE



VILLAGE OF FALL RIVER

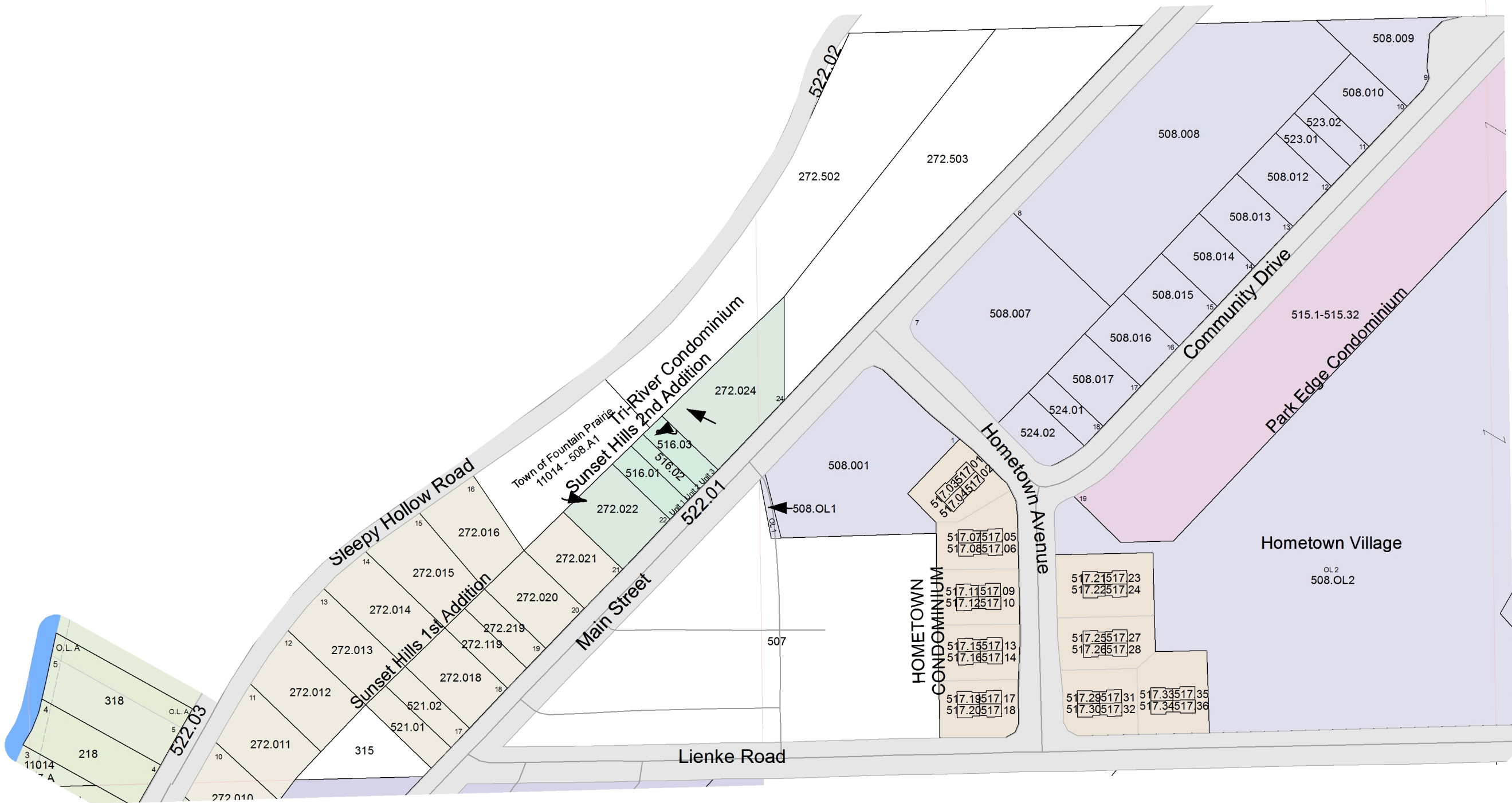
T11N R12E

1 inch = 200 feet 1:2,400



SEE TOWN OF FOUNTAIN PRAIRIE

SEE TOWN OF FOUNTAIN PRAIRIE



SEE VILLAGE OF FALL RIVER - Page 01

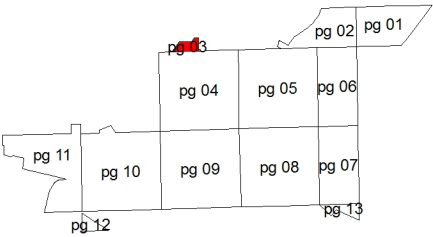
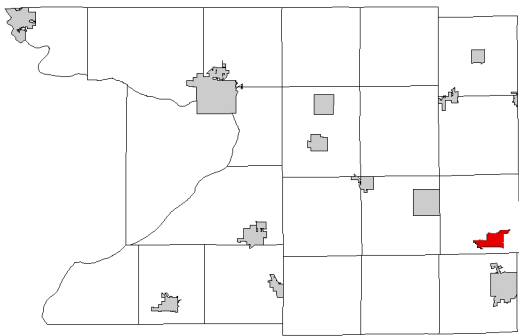
SEE VILLAGE OF FALL RIVER - Page 05

VILLAGE OF FALL RIVER

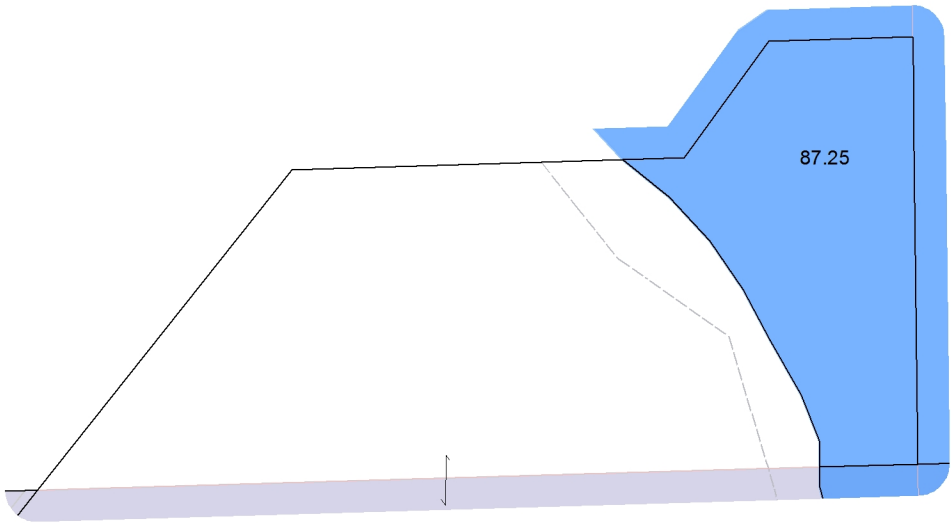
T11N R12E

1 inch = 200 feet 1:2,400

SEE TOWN OF FOUNTAIN PRAIRIE



SEE TOWN OF FOUNTAIN PRAIRIE



SEE TOWN OF FOUNTAIN PRAIRIE

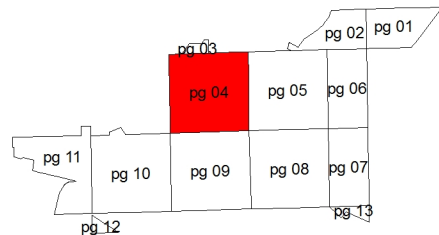
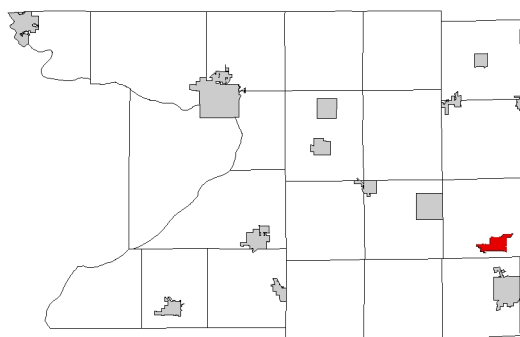
SEE VILLAGE OF FALL RIVER - Page 04



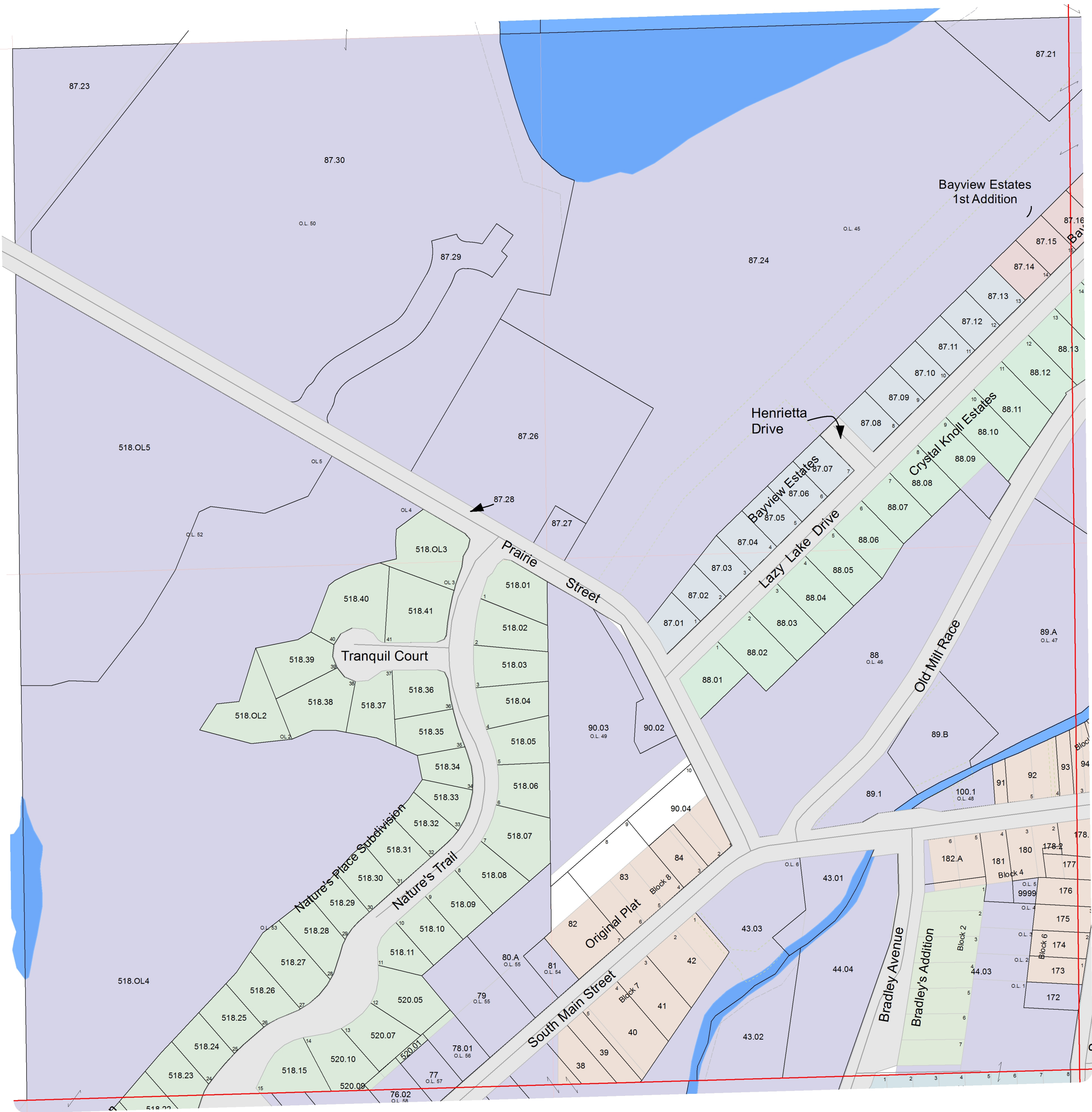
# VILLAGE OF FALL RIVER

T11N R12E

1 inch = 200 feet 1:2,400



SEE TOWN OF FOUNTAIN PRAIRIE



SEE TOWN OF FOUNTAIN PRAIRIE

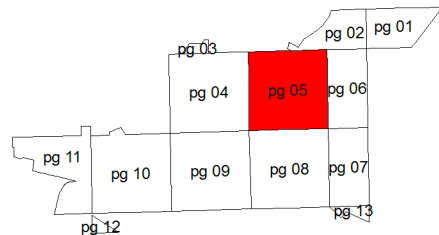
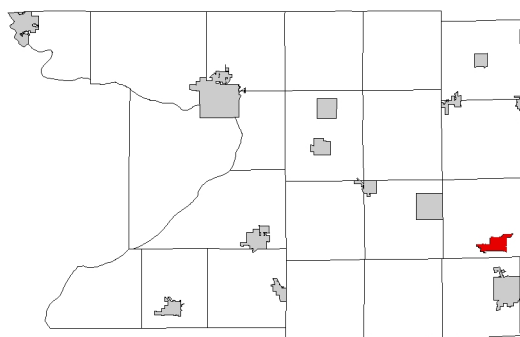
SEE VILLAGE OF FALL RIVER - Page 05

SEE VILLAGE OF FALL RIVER - Page 09

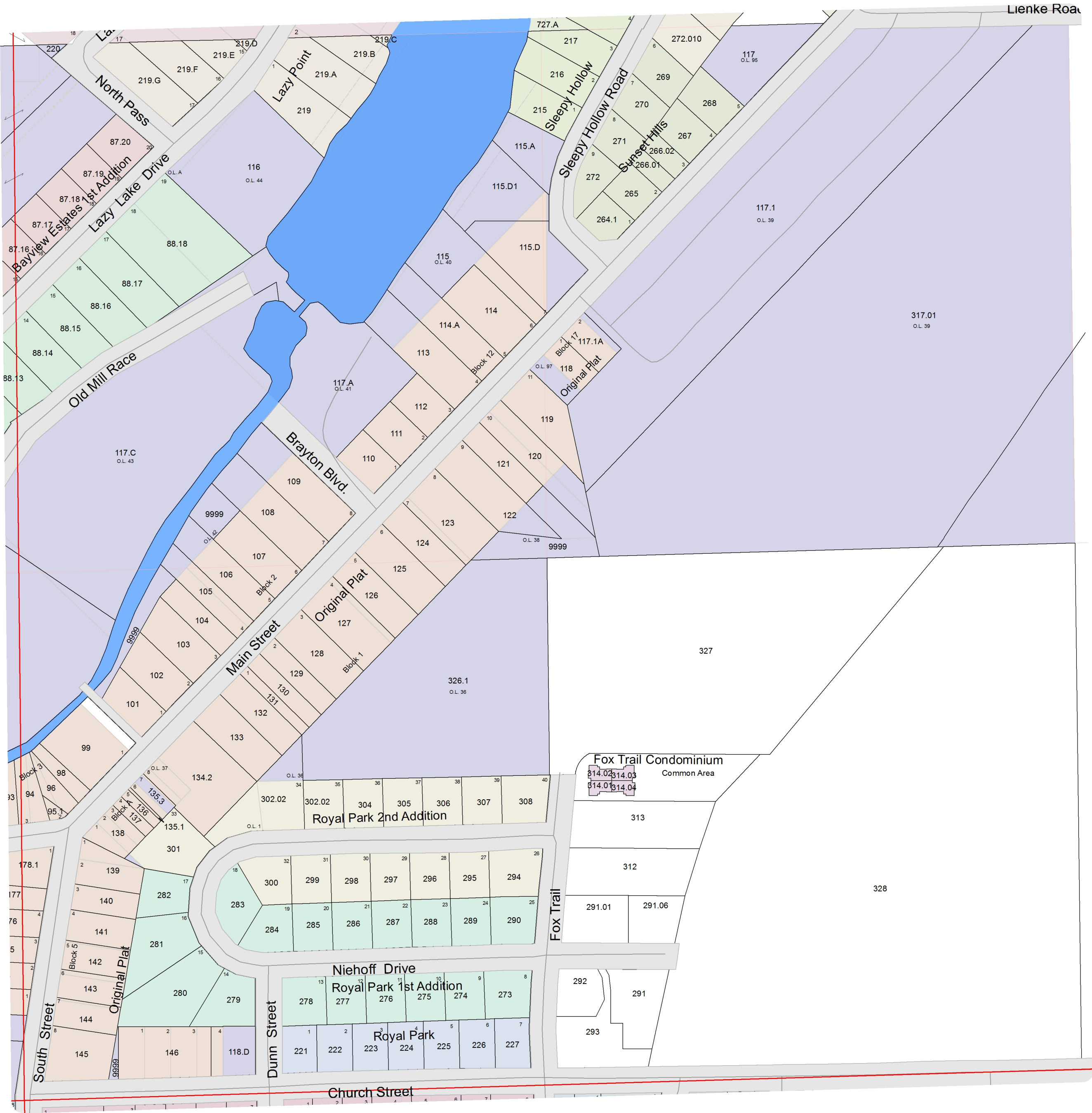
# VILLAGE OF FALL RIVER

T11N R12E

1 inch = 200 feet 1:2,400



SEE VILLAGE OF FALL RIVER - Page 02



SEE VILLAGE OF FALL RIVER - Page 04

SEE VILLAGE OF FALL RIVER - Page 06

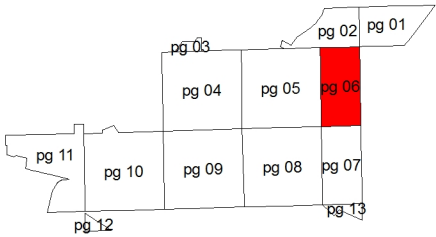
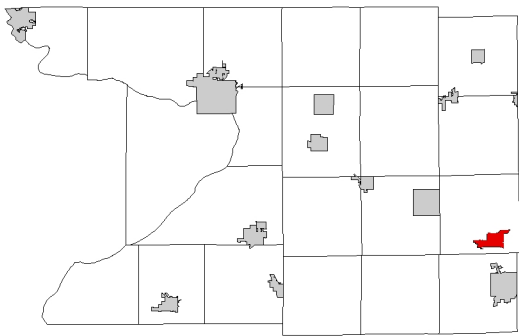
SEE VILLAGE OF FALL RIVER - Page 08



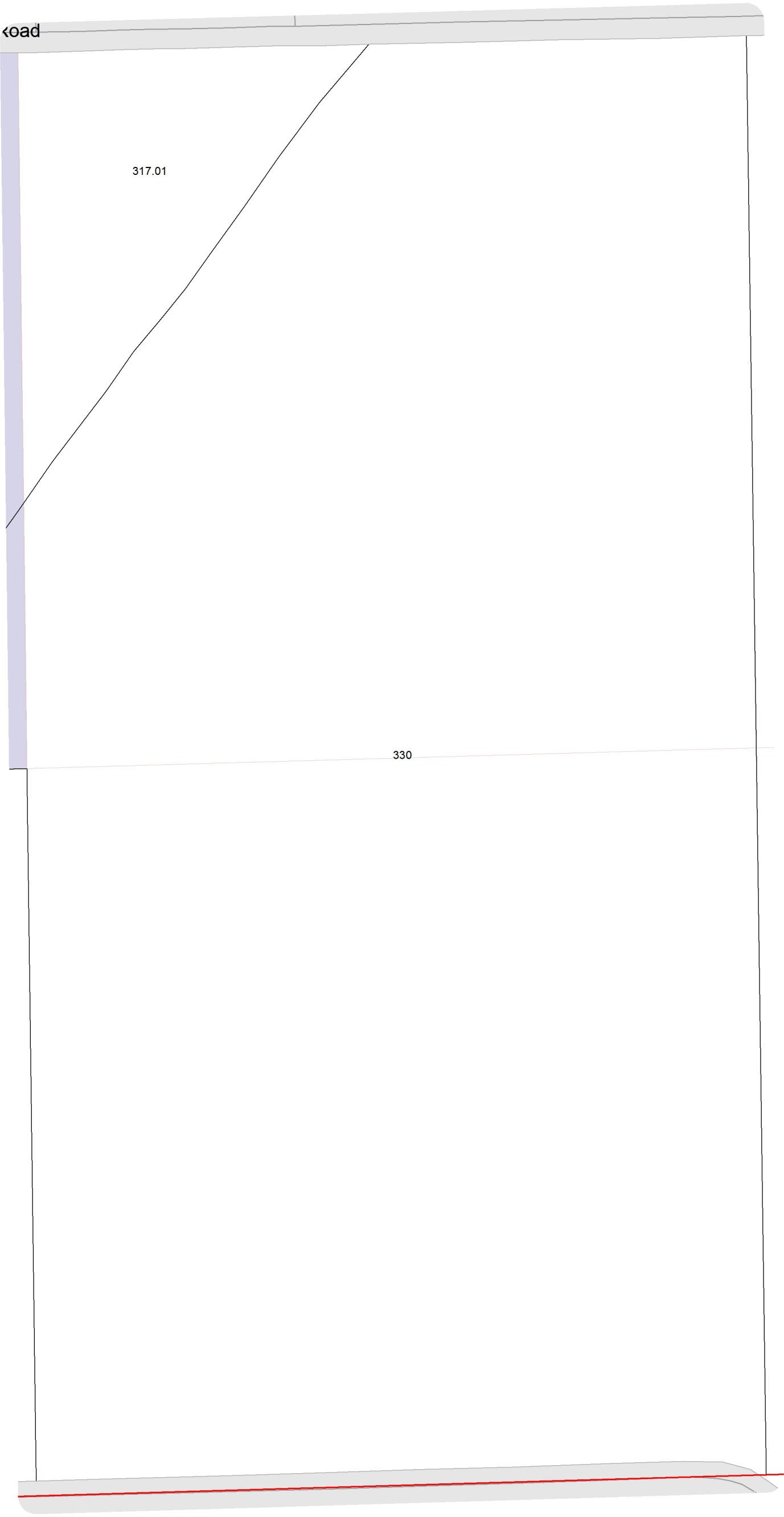
# VILLAGE OF FALL RIVER

T11N R12E

1 inch = 200 feet 1:2,400



SEE VILLAGE OF FALL RIVER - Page 02



SEE VILLAGE OF FALL RIVER - Page 05

SEE TOWN OF FOUNTAIN PRAIRIE

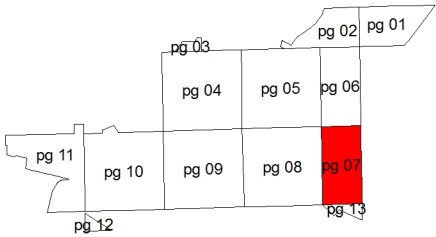
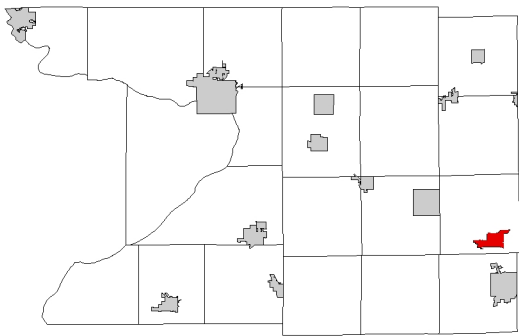
SEE VILLAGE OF FALL RIVER - Page 07



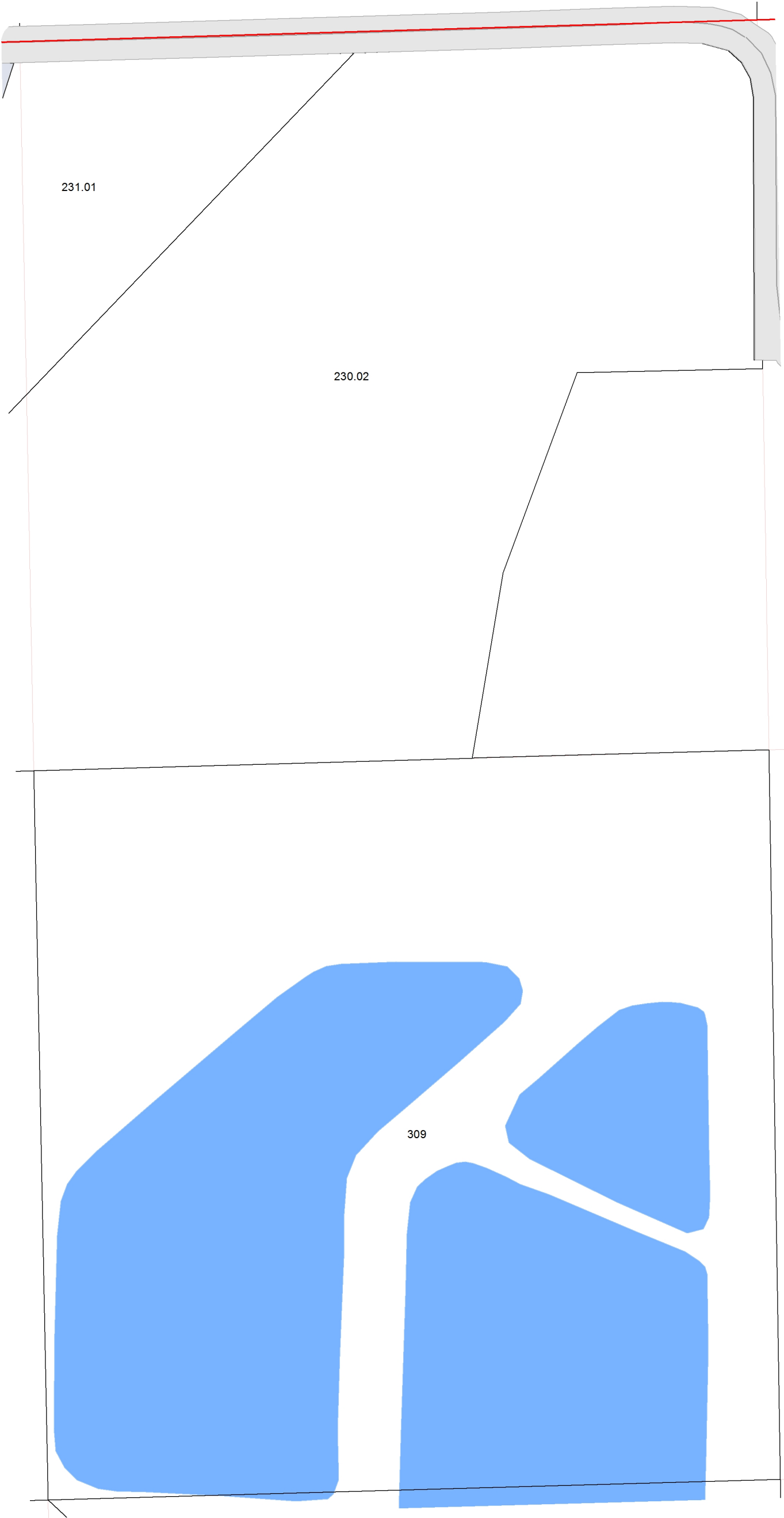
VILLAGE OF FALL RIVER

T11N R12E

1 inch = 200 feet 1:2,400



SEE VILLAGE OF FALL RIVER - Page 06



SEE VILLAGE OF FALL RIVER - Page 08

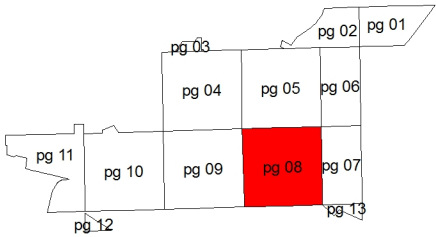
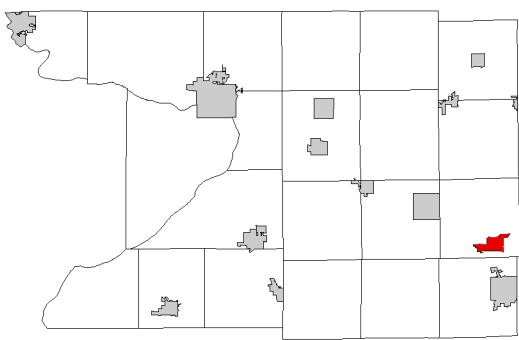
SEE TOWN OF FOUNTAIN PRAIRIE

SEE VILLAGE OF FALL RIVER - Page 13

VILLAGE OF FALL RIVER

T11N R12E

1 inch = 200 feet 1:2,400



SEE VILLAGE OF FALL RIVER - Page 05



SEE VILLAGE OF FALL RIVER - Page 09

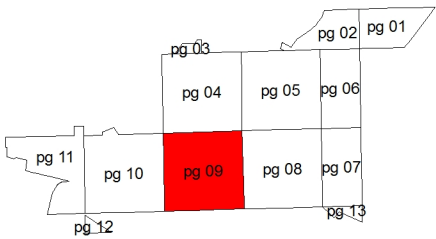
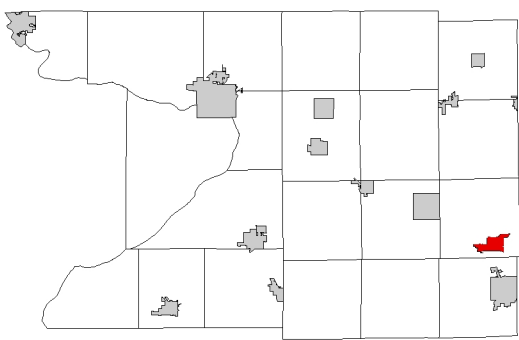
SEE VILLAGE OF FALL RIVER - Page 07

SEE TOWN OF FOUNTAIN PRAIRIE

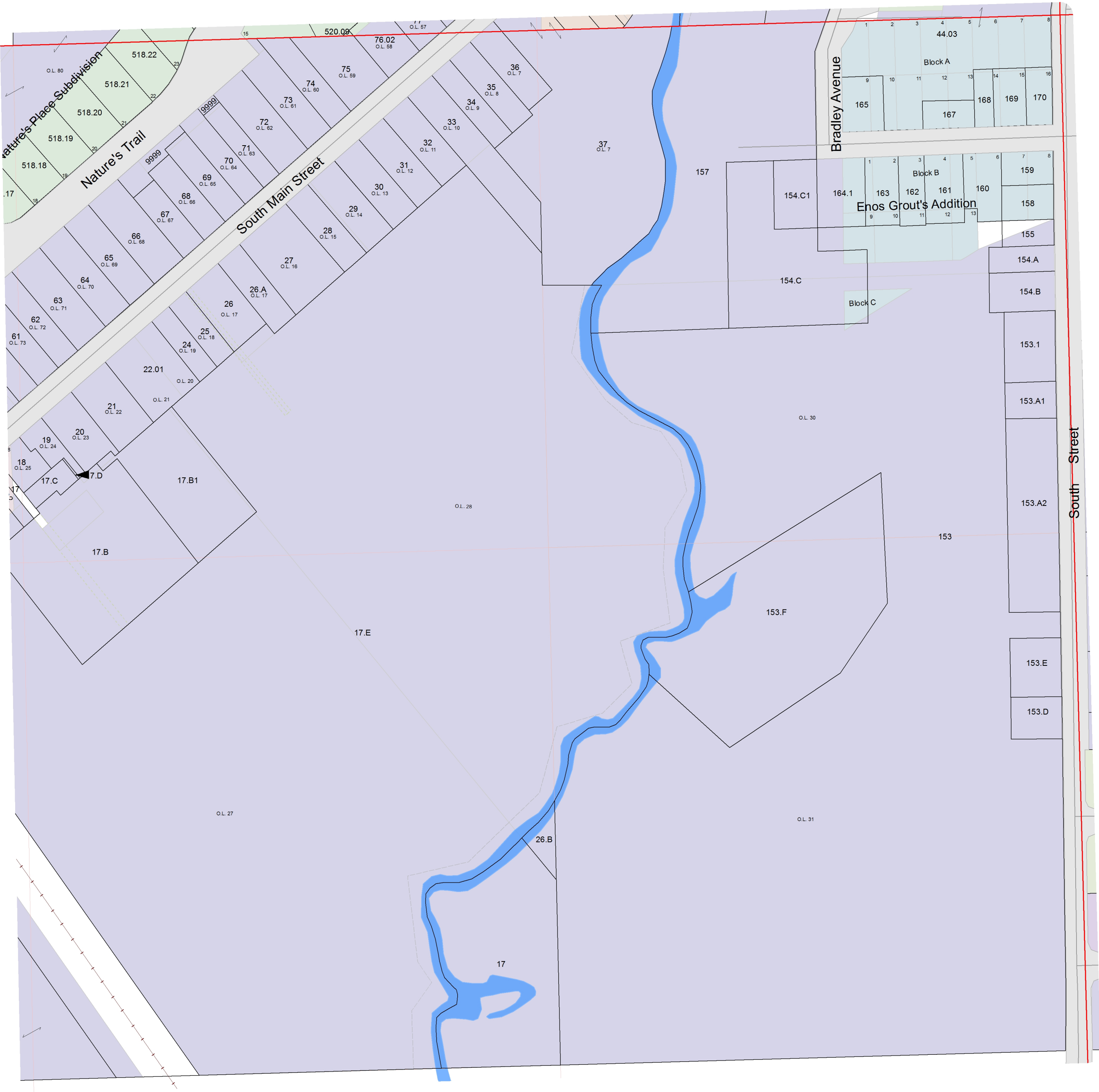
VILLAGE OF FALL RIVER

T11N R12E

1 inch = 200 feet 1:2,400



SEE VILLAGE OF FALL RIVER - Page 04



SEE VILLAGE OF FALL RIVER - Page 10

SEE VILLAGE OF FALL RIVER - Page 08

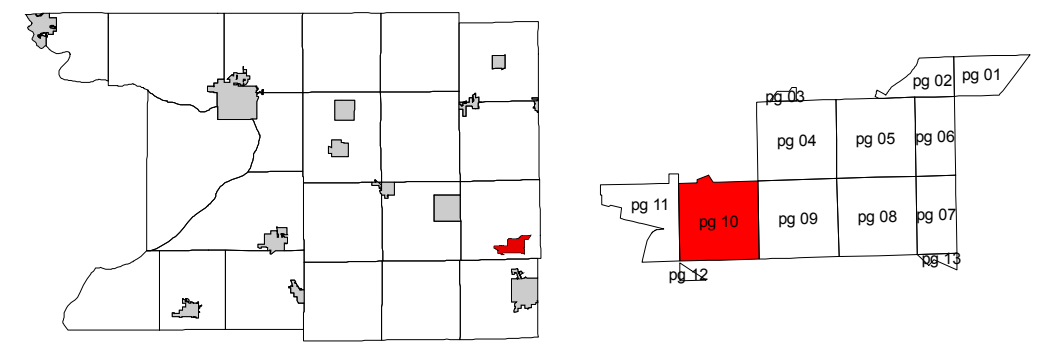
SEE TOWN OF FOUNTAIN PRAIRIE



# VILLAGE OF FALL RIVER

**T11N R12E**

1 inch = 200 feet    1:2,400



SEE TOWN OF FOUNTAIN PRAIRIE



SEE VILLAGE OF FALL RIVER - Page 11

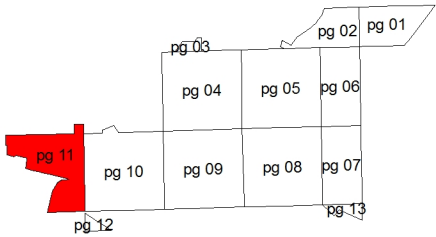
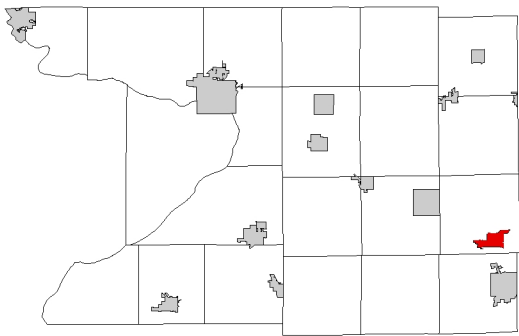
SEE VILLAGE OF FALL RIVER - Page 09

SEE TOWN OF FOUNTAIN PRAIRIE

VILLAGE OF FALL RIVER

T11N R12E

1 inch = 200 feet 1:2,400



SEE TOWN OF FOUNTAIN PRAIRIE



SEE TOWN OF FOUNTAIN PRAIRIE

SEE VILLAGE OF FALL RIVER - Page 10

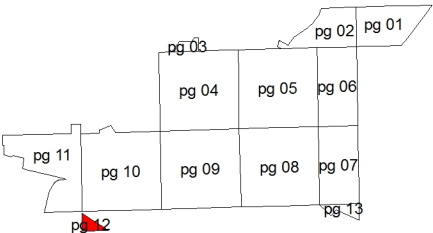
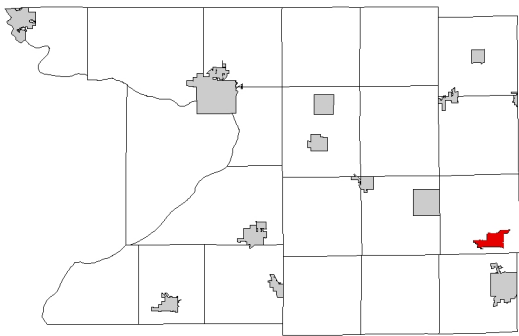
SEE TOWN OF FOUNTAIN PRAIRIE

VILLAGE OF FALL RIVER

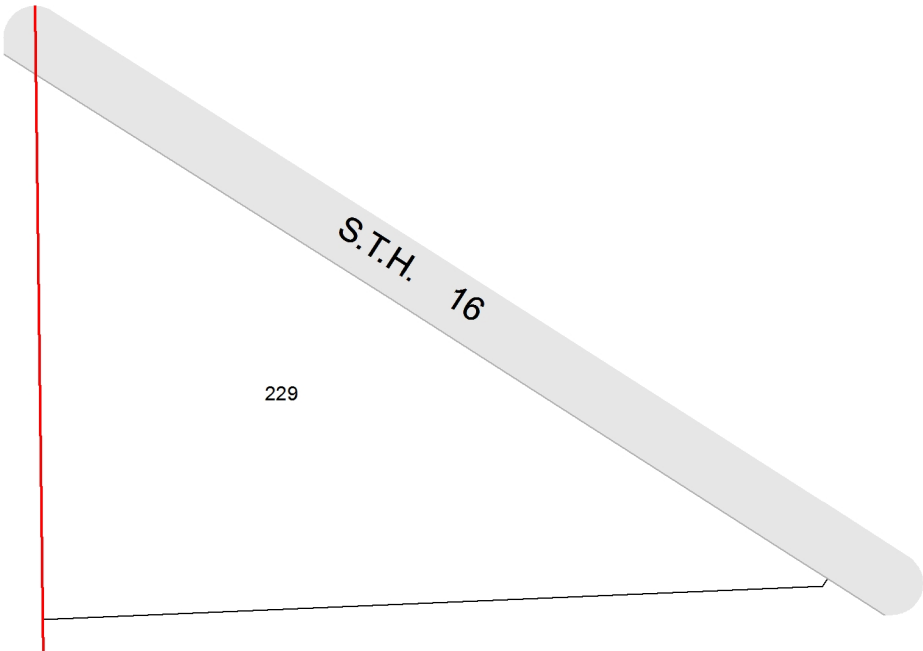
T11N R12E

1 inch = 200 feet 1:2,400

SEE TOWN OF FOUNTAIN PRAIRIE



SEE TOWN OF FOUNTAIN PRAIRIE



SEE TOWN OF FOUNTAIN PRAIRIE

SEE TOWN OF FOUNTAIN PRAIRIE

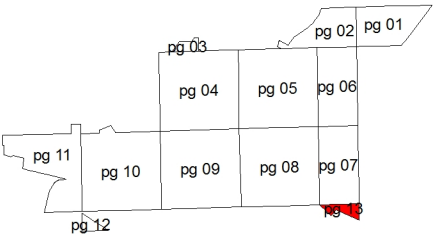
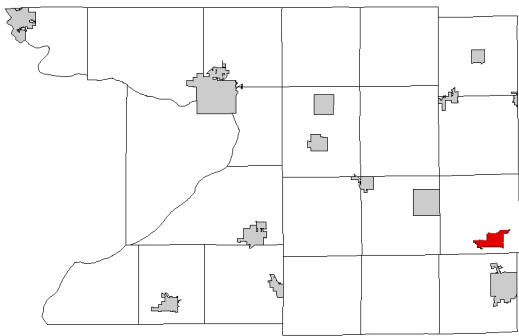


VILLAGE OF FALL RIVER

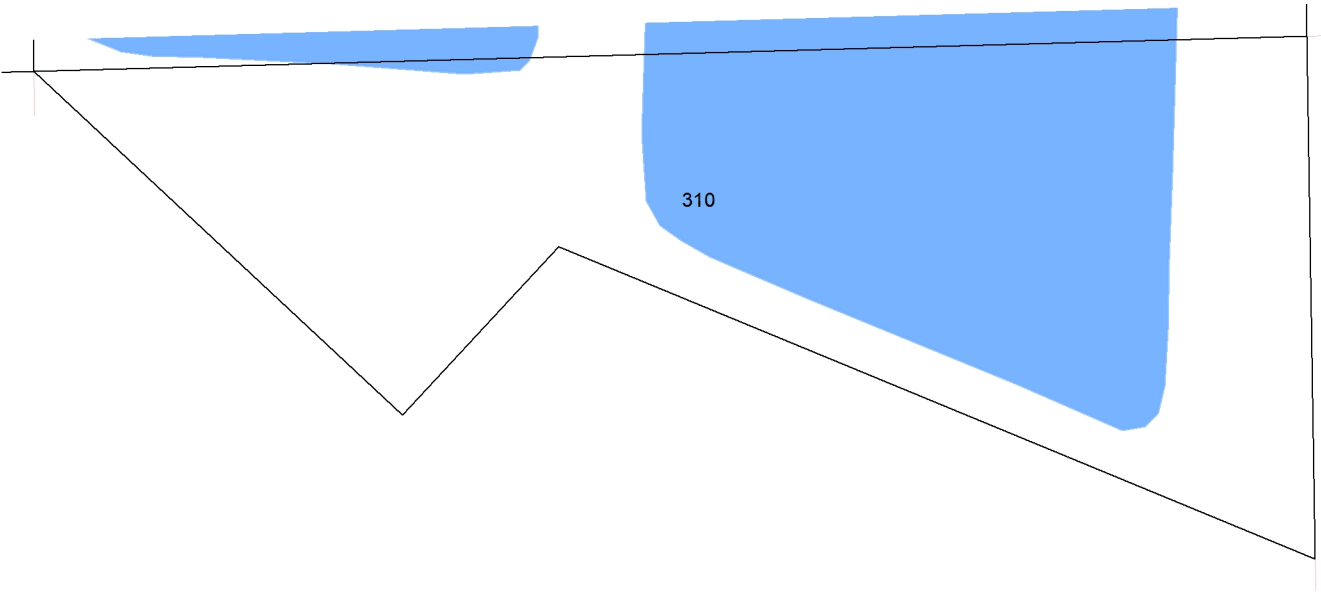
T11N R12E

1 inch = 200 feet 1:2,400

SEE VILLAGE OF FALL RIVER - Page 07



SEE TOWN OF FOUNTAIN PRAIRIE



SEE TOWN OF FOUNTAIN PRAIRIE

SEE TOWN OF FOUNTAIN PRAIRIE